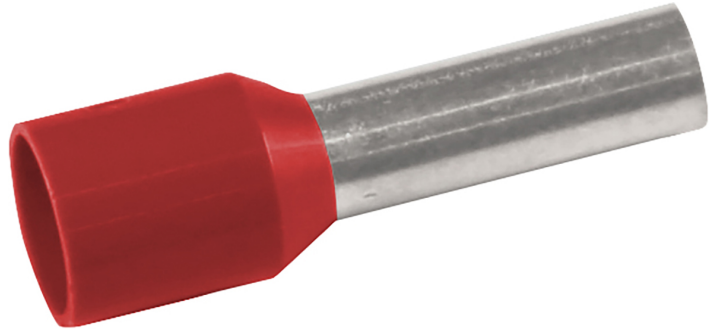


Pre-insulated end terminals 0.14 - 95 mm² ETD, alternative colour

A10-18ETD

- Material: Cu 99.95%, tin plated Cu/Sn, CSA approved.
- Polypropylene insulation, colour code DIN46228.

Pre-insulated end terminal ETD, 10 mm². Used with certified tool GEB3550.



Item number: **7287-014300**

EAN: **7393487045408**

d (mm): **7.4**

L1 (mm): **18**

L (mm): **27**

s (mm): **20**

Working temperature, Min (°C): **-40**

Working temperature, Max (°C): **40**

Insulation material: **PP**

Insulation colour: **Red (end sleeves)**

Material: **Cu, Cu/Sn**

AWG/MCM Cu: **8 AWG**

mm² Cu: **10**