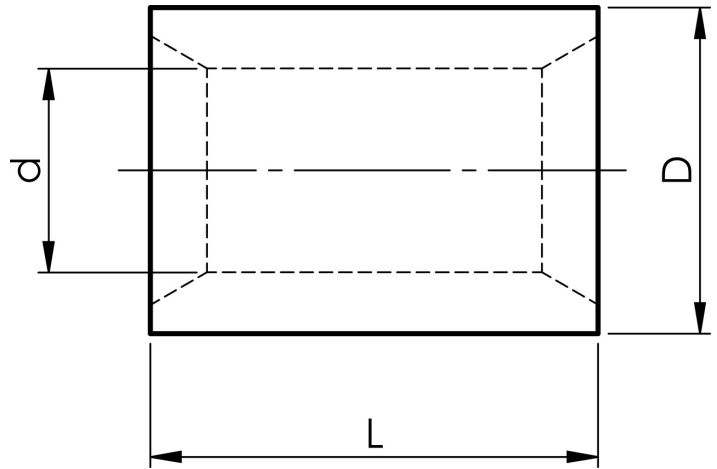


KSxP parallel connectors for conductors total 10 - 630 mm²

KS400P

- Material: Cu 99.95%, tin plated Cu/Sn. For stranded (class 2) and multi-stranded (class 5) Cu conductors, for multi-stranded Cu conductors contact crimping using the Dual system is recommended.

Uninsulated parallel connector for multi-stranded (class 5) and stranded (class 2) Cu conductors, 400 mm². Used with Elpress certified systems V1300, V250.



Item number: **7303-051500**

EAN: **7393487047600**

d (mm): **30**

D (mm): **38**

L (mm): **50**

AWG/MCM Cu: **700 MCM**

mm² Cu: **400**

Winding (mm²): **412-500**