

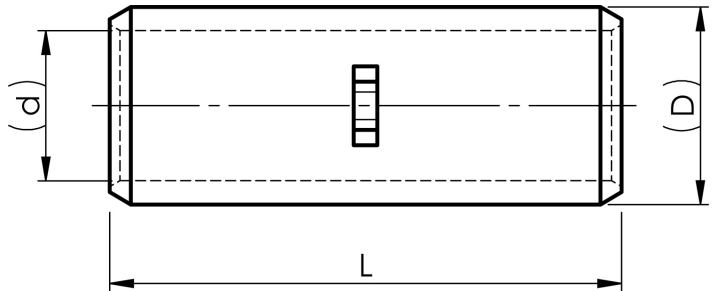
KSD300

- Material: Cu 99.95%, tin plated Cu/Sn.
- For stranded (class 2) Cu conductors.
- Cable inspection hole and cable stop.

Examples of marking: 14 70 (Elpress logotype is included on the marking.)

14 = Die No. 70 = mm²

Uninsulated through connector for stranded (class 2) Cu conductors, 300 mm². Used with Elpress certified systems V1300 or V250.



Item number: **7303-002800**

EAN: **7393487008090**

d (mm): **24**

D (mm): **30**

L (mm): **90**

s (mm): **42**

AWG/MCM Cu: **550 MCM**

mm² Cu: **300**