

KRF16-6X2-16

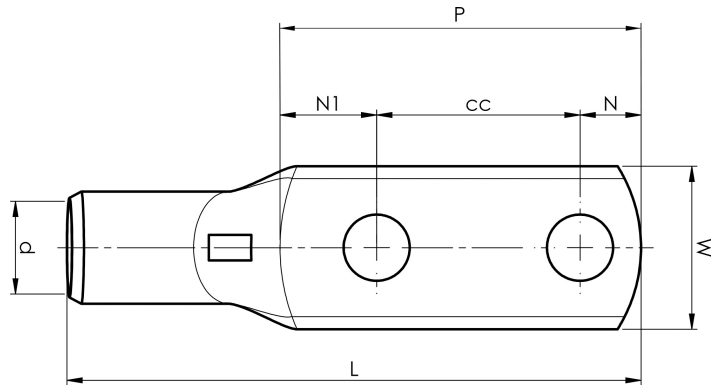
- Material: Cu 99.95%, tin plated Cu/Sn.
- Inspection hole
- For stranded (class 2) and multi-stranded (class 5) Cu conductors, for multi-stranded Cu conductors contact crimping using the Dual system is recommended.
- UL-approved.

Example of marking KRF: 17 (neck) Elpress logotype 70 10F (palm)

17 = Die No. 70 = mm² 10 = palm hole for M10 F =
type KRF for stranded and flexible conductors.

2 holed tube terminal for multi-stranded (class 5)
and stranded (class 2) Cu-conductors (acc. to IEC
60228), 16 mm², with two M6 holes in the palm.

Used with Elpress certified systems V600, V1300 or
V250.



Item number: **7301-504200**

EAN: **7393487038417**

W (mm): **13**
t (mm): **2.8**
N (mm): **6.5**
N1 (mm): **8.5**
P (mm): **31**
cc (mm): **16**
f (mm): **1.1**
d (mm): **6**
D (mm): **9**
L (mm): **50**
s (mm): **11**

Screw: **M6x2**

Inspection hole: **Yes**

AWG/MCM Cu: **6 AWG**

mm² Cu: **16**