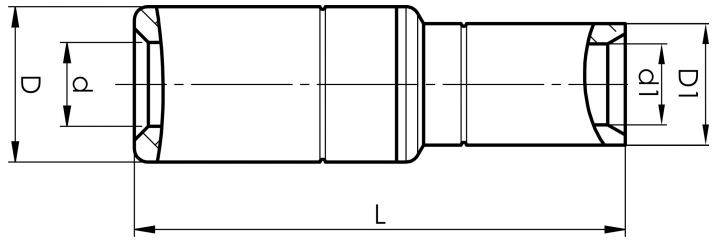


AKS300-240A

- Connector from Al conductor to Cu conductor.
- Stranded/solid Al conductors, stranded/multi-stranded Cu conductors.
- For multi-stranded Cu conductors, contact crimping using the Dual system is recommended.
- Two crimps are required for Al, normally one for Cu.



AlCu through connector, from Al conductor to Cu conductor. For stranded Al cable 300 mm² to the stranded/multi-stranded Cu cable 240 mm². When crimping the Cu section, place the dies between the mark on the sleeve and the edge of the Cu section. Used with Elpress certified system V250.



Item number: **7333-403600**

EAN: **7393487010031**

s1 (mm): **30**

d (mm): **22**

D (mm): **36**

L (mm): **123.5**

s (mm): **83**

d1 (mm): **22.5**

D1 (mm): **29**

AWG/MCM Stranded Al: **550 MCM**

AWG/MCM Cu: **450 MCM**

mm² Stranded Al: **300**

mm² Cu: **240**