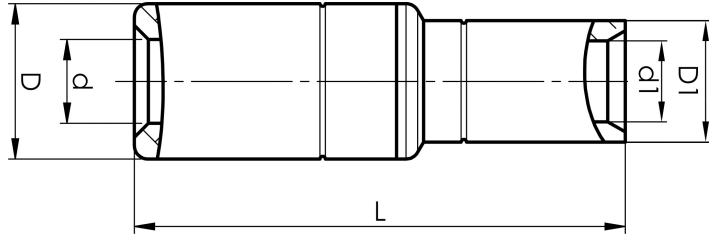


AKS150-120

- Connector from Al conductor to Cu conductor.
- Stranded/solid Al conductors, stranded/multi-stranded Cu conductors.
- For multi-stranded Cu conductors, contact crimping using the Dual system is recommended.
- Two crimps are required for Al, normally one for Cu.



AlCu through connector, from Al conductor to Cu conductor. For stranded Al cable 150 mm², or for solid Al cable 185 mm², to stranded/multi-stranded Cu cable 120 mm². When crimping the Cu section, place the dies between the mark on the sleeve and the edge of the Cu section. Used with Elpress certified systems V1300, V250.



Item number: **7333-402400**

EAN: **7393487009912**

s1 (mm): **35**
d (mm): **15.8**
D (mm): **25**
L (mm): **103.5**
s (mm): **61**
d1 (mm): **17**
D1 (mm): **22**

AWG/MCM Stranded Al: **300 MCM**

AWG/MCM Solid Al: **350 MCM**

AWG/MCM Cu: **250 MCM**

mm² Stranded Al: **150**

mm² Solid Al: **185**

mm² Cu: **120**