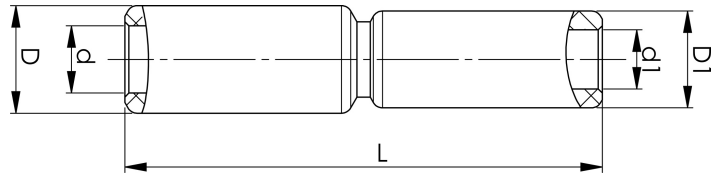


Through connectors with aluminium partitions with different areas 16 - 400 mm<sup>2</sup>

# AS95-50

Al through connector with partition for stranded Al cable 95-50 mm<sup>2</sup>, or for solid Al cable 120-70 mm<sup>2</sup>.  
Used for splicing Al conductors of different areas.  
Used with Elpress certified systems V1300, V250.



Item number: **7313-408700**

EAN: **7393487009219**

s1 (mm): **45**  
d (mm): **12.5**  
D (mm): **25**  
L (mm): **116.1**  
s (mm): **60**  
d1 (mm): **9.6**  
D1 (mm): **20**

AWG/MCM Stranded Al: **1/0 - 3/0 AWG**

AWG/MCM Solid Al: **25020**

mm<sup>2</sup> Stranded Al: **95-50**

mm<sup>2</sup> Solid Al: **120-70**