

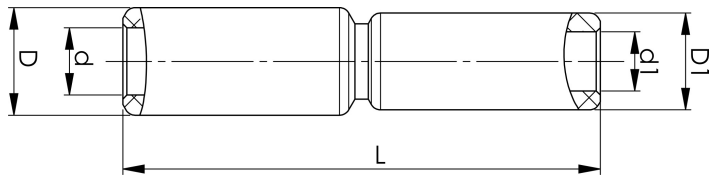
Through connectors with aluminium partitions with different areas 16 - 400 mm²

AS95-35

Al through connector with partition for stranded Al cable 95-35 mm², or for solid Al cable 120-50 mm².

Used for splicing Al conductors of different areas.

Used with Elpress certified systems V1300, V250.



Item number: **7313-401900**

EAN: **7393487024304**

s1 (mm): **45**

d (mm): **12.5**

D (mm): **25**

L (mm): **116**

s (mm): **60**

d1 (mm): **8.5**

D1 (mm): **20**

AWG/MCM Stranded Al: **2 - 3/0 AWG**

AWG/MCM Solid Al: **10250**

mm² Stranded Al: **95-35**

mm² Solid Al: **120-50**