

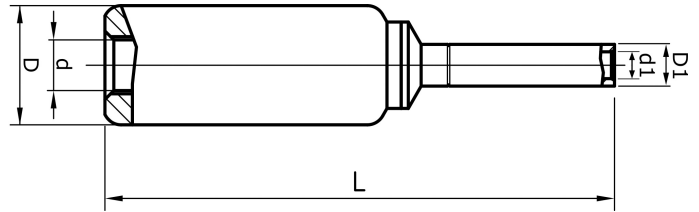
Al/Cu-overgangsmuffe Al 16 - 95 mm² og Cu 10 mm², Through connectors of aluminium 16 - 95 mm² to solid copper 10 mm²

AKS16-10S

- Transition joints from stranded Al conductors to solid Cu conductors 10 mm² (e.g. Excel, Excelett).
- Two crimps are needed for both Al and Cu.

AlCu through connector, from Al conductor to Cu conductor for stranded Al-cable 16 mm², or for solid Al cable 25 (16) mm², to solid Cu cable 10 mm².

When hexagonal crimping Cu conductors, the dies are placed in the middle between the marking groove and the outer edge. Used with Elpress certified systems V1300, V250.



Item number: **7333-407000**

EAN: **7393487020634**

s1 (mm): **33**

d (mm): **5.9**

D (mm): **13**

L (mm): **64.5**

s (mm): **29**

d1 (mm): **4.5**

D1 (mm): **7**

AWG/MCM Stranded Al: **6 AWG**

AWG/MCM Solid Al: **4 AWG**

AWG/MCM Cu: **8 AWG**

mm² Stranded Al: **16**

mm² Solid Al: **25**

mm² Cu: **10**