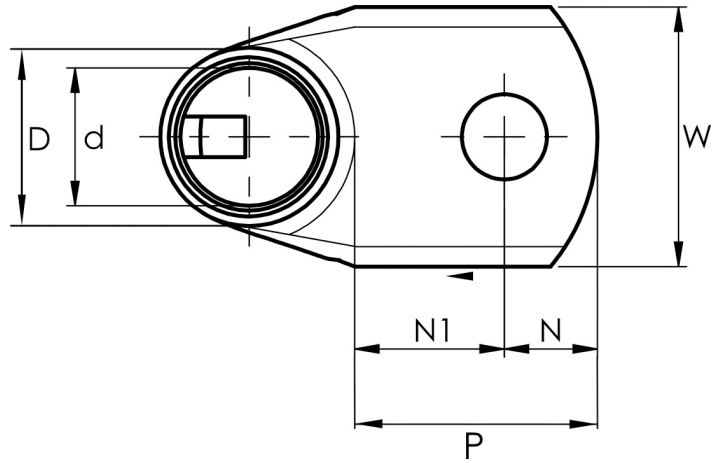


KRF angled terminals 90°, 10 - 185 mm²

KRF185-12-90GR-SB



Item number: **7301-472500**

EAN: **7393487060111**

A (mm): **42.5**

W (mm): **39**

t (mm): **5.9**

N (mm): **12.5**

N1 (mm): **19.5**

P (mm): **32**

d (mm): **21**

D (mm): **27**

s (mm): **37**

Screw: **M12**

Angle (°): **90**

Inspection hole: **Yes**

AWG/MCM Cu: **350 MCM**

mm² Cu: **185**