

# KR240-12DIN

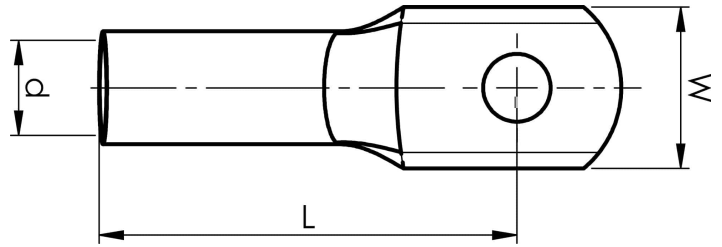
- Material: Cu 99.95%, tin plated Cu/Sn.
- Dimensions according to DIN 46235, the number of crimps is indicated on the neck of the terminal.

**Example of palm marking: 70 10**

70 = mm<sup>2</sup> 10 = palm hole for M10

Tube terminal for multi-stranded (class 5) and stranded (class 2) Cu conductors (acc. to IEC 60228), 240 mm<sup>2</sup>, with an M12 hole in the palm.

Used with Elpress certified systems V1300, V250.



Item number: **7301-091600**

EAN: **7393487015111**

W (mm): **42**

N (mm): **14**

N1 (mm): **26**

d (mm): **21.5**

D (mm): **29**

L (mm): **92**

s (mm): **42**

Screw: **M12**

Inspection hole: **Yes**

AWG/MCM Cu: **450 MCM**

mm<sup>2</sup> Cu: **240**