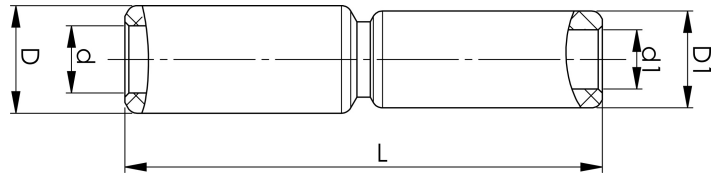


Through connectors with aluminium partitions with different areas 16 - 400 mm²

AS150-120

Al through connector with partition for stranded Al cable 150-120 mm², or for solid Al cable 185-150 mm². Used for splicing Al conductors of different areas. Used with Elpress certified systems V1300, V250.



Item number: **7313-409300**

EAN: **7393487009271**

s1 (mm): **60**

d (mm): **15.8**

D (mm): **25**

L (mm): **130**

s (mm): **60**

d1 (mm): **14**

D1 (mm): **25**

AWG/MCM Stranded Al: **4/0 AWG - 300 MCM**

AWG/MCM Solid Al: **350300**

mm² Stranded Al: **150-120**

mm² Solid Al: **185-150**