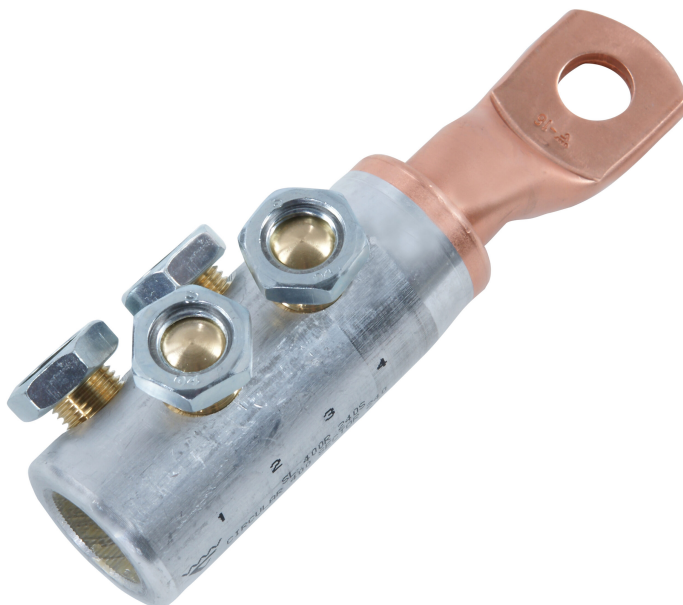


Shearbolt terminals 10 - 630 mm<sup>2</sup> (reversible screw)

# SL400R240S-20

- shearbolt material: brass for minimum friction
- reversible shear-off shearbolts
- voltage range 1-36 kV
- meets the requirements of IEC standard 61238-1:2003
- the terminals are of the bimetallic type for best functionality

Shearbolt terminal 1-36 kV that is suitable for both Al and Cu class 1 and class 2 cable, with an M20 hole in the palm. Round cable 300-400 mm<sup>2</sup>, sector shaped cable 240 mm<sup>2</sup>.



Item number: **7334-011000**

EAN: **7393487033269**

a (mm): **20**

W (mm): **41.5**

t (mm): **9.6**

N (mm): **21**

d (mm): **25.8**

D (mm): **41,5**

L1 (mm): **103**

L (mm): **182**

s (mm): **97**

Screw: **M20**

Max voltage (kV): **1-36**

Cable type Round (mm<sup>2</sup>): **300-400**

Cable type Sector (mm<sup>2</sup>): **240**