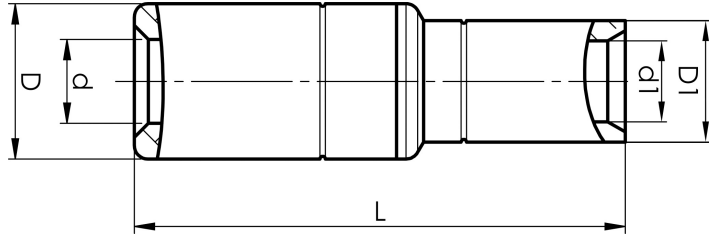


AKS400-300A

- Connector from Al conductor to Cu conductor.
- Stranded/solid Al conductors, stranded/multi-stranded Cu conductors.
- For multi-stranded Cu conductors, contact crimping using the Dual system is recommended.
- Two crimps are required for Al, normally one for Cu.



AlCu through connector, from Al conductor to Cu conductor. For stranded Al cable 400 mm² to stranded/multi-stranded Cu cable 300 mm². When crimping the Cu section, place the dies between the mark on the sleeve and the edge of the Cu section. Used with Elpress certified system V250.



Item number: **7333-404000**

EAN: **7393487010079**

s1 (mm): **30**

d (mm): **25**

D (mm): **40**

L (mm): **125**

s (mm): **83**

d1 (mm): **24.5**

D1 (mm): **31.5**

AWG/MCM Stranded Al: **700 MCM**

AWG/MCM Cu: **550 MCM**

mm² Stranded Al: **400**

mm² Cu: **300**