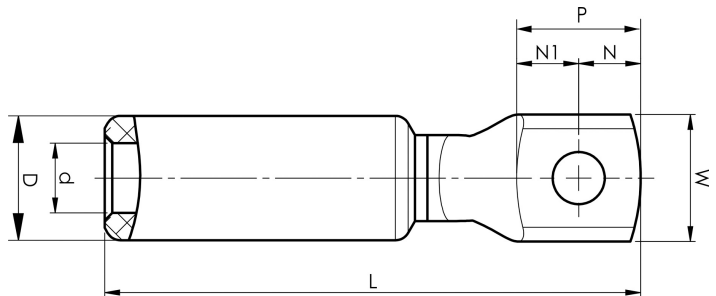


Aluminium-copper terminals 16 - 1200 mm<sup>2</sup>

# AKK70-12

- Used for connection of Al conductors for apparatus outlets and busbars of Cu.
- Two crimps are needed.

AlCu terminal for stranded Al cable 70 mm<sup>2</sup>, or for solid Al cable 95 mm<sup>2</sup>, with an M12 hole in the palm.  
Used with Elpress certified systems V1300, V250.



Item number: **7331-401900**  
EAN: **7393487009400**

W (mm): **25**  
t (mm): **5.8**  
N (mm): **12.5**  
N1 (mm): **12.5**  
P (mm): **25**  
d (mm): **11.3**  
D (mm): **20**  
L (mm): **89**  
s (mm): **45**

Screw: **M12**

AWG/MCM Stranded Al: **2/0 AWG**  
AWG/MCM Solid Al: **3/0 AWG**  
mm<sup>2</sup> Stranded Al: **70**  
mm<sup>2</sup> Solid Al: **95**