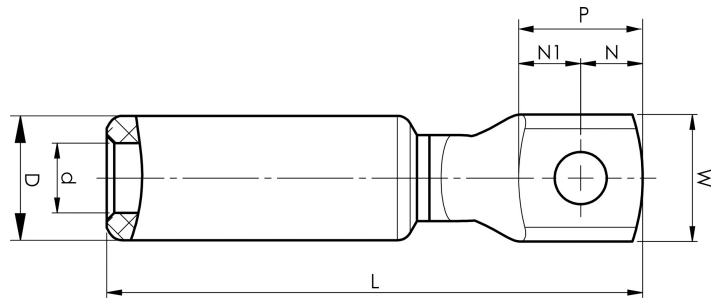


# AKK25-12

- Used for connection of Al conductors for apparatus outlets and busbars of Cu.
- Two crimps are needed.

AlCu terminal for stranded Al cable 25 mm<sup>2</sup>, or for solid Al cable 35 mm<sup>2</sup>, with an M12 hole in the palm.  
Used with Elpress certified systems V1300, V250.



Item number: **7331-400800**  
EAN: **7393487009332**

W (mm): **22**  
t (mm): **4**  
N (mm): **11.5**  
N1 (mm): **15.5**  
P (mm): **27**  
d (mm): **6.8**  
D (mm): **13**  
L (mm): **75**  
s (mm): **29**

Screw: **M12**

AWG/MCM Stranded Al: **4 AWG**  
AWG/MCM Solid Al: **2 AWG**  
mm<sup>2</sup> Stranded Al: **25**  
mm<sup>2</sup> Solid Al: **35**