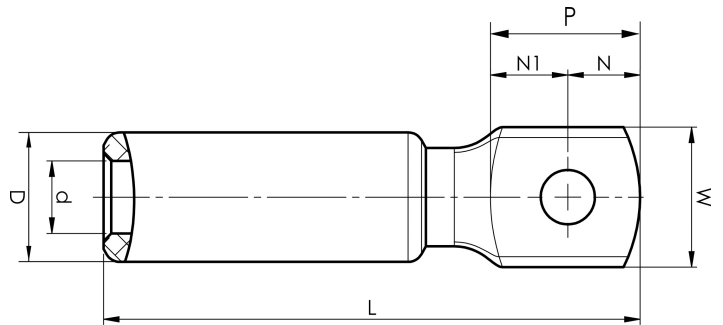


Aluminium terminals 16 - 1200 mm<sup>2</sup>

# AK300-12SOLID

- Used for connecting Al conductors to Al busbar.
- Two crimps are needed.

Al terminal for solid Al cable 300 mm<sup>2</sup> with an M12 hole in the palm. Used with Elpress certified system V250.



Item number: **7311-405300**

EAN: **7393487020573**

W (mm): **41**

t (mm): **14**

N (mm): **18**

N1 (mm): **25**

P (mm): **43**

d (mm): **20**

D (mm): **36**

L (mm): **154**

s (mm): **83**

Screw: **M12**

AWG/MCM Solid Al: **550 MCM**

mm<sup>2</sup> Solid Al: **300**