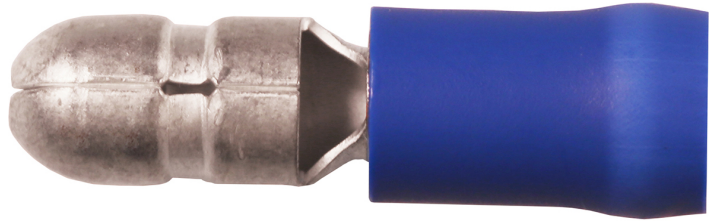


Bullet 0.25 - 6 mm²

A2505HA

- Materials: brass/Cu, tin plated Cu/Sn.
- Insulation PVC, Easy-entry.

Pre-insulated bullet for 1.5-2.5 mm² cable. Used with certified tool GSA0760.



Item number: **7493-500200**

EAN: **7393487005198**

d (mm): **4.3**

L (mm): **20.7**

s (mm): **8**

Insulation material: **PVC**

Insulation colour: **Blue (insulated terminals)**

Material: **Brass/Cu, Cu/Sn**

Bullet \varnothing (mm): **5**

Neck type: **Reinforcement sleeve**

AWG/MCM Cu: **16 - 14 AWG**

mm² Cu: **1,5-2,5**