

KS/KSF through connectors with partition 10-500 mm²

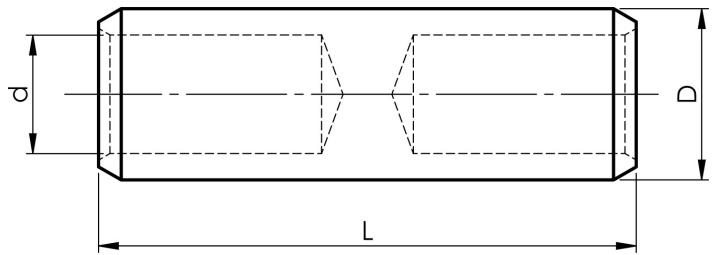
KSF185M

- Material: Cu 99.95%, tin plated Cu/Sn.
- With partition to prevent oil leakage.
- For stranded (class 2) and multi-stranded (class 5) Cu conductors, for multi-stranded Cu conductors contact crimping using the Dual system is recommended.
- UL-approved, DNV approved.

Examples of marking: 20 95F (Elpress logotype is included on the marking.)

20 = Die No. 95 = mm² F = type KSF for stranded and flexible conductors 111 = screen mm²

Uninsulated through connector for multi-stranded (class 5) and stranded (class 2) Cu conductors, 185 mm². Used with Elpress certified systems V1300, V250.



Item number: **7303-103100**

EAN: **7393487015760**

d (mm): **21**

D (mm): **27**

L (mm): **74**

s (mm): **32**

AWG/MCM Cu: **350 MCM**

mm² Cu: **185**