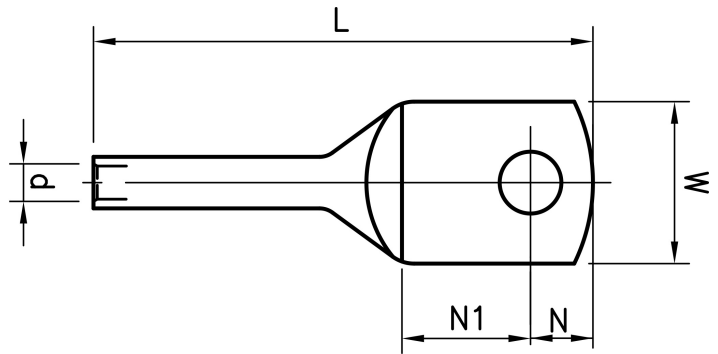


KRX16-12

- Material: Cu 99.95%, tin plated Cu/Sn.
- Mounted pull-strain relieved.

Uninsulated tube terminal for Cu conductors 16 mm² stranded (Fxcel) with an M12 hole in the palm. Used with Elpress certified systems V600, V1300, V250.



Item number: **7301-112000**
EAN: **7393487035553**

W (mm): **19**
t (mm): **1.9**
N (mm): **12.5**
N1 (mm): **19.5**
d (mm): **5.5**
D (mm): **8,5**
L (mm): **67**
s (mm): **30**

Screw: **M12**

AWG/MCM Cu: **6 AWG**
mm² Cu: **16**