

KRT tube terminals 10 - 500 mm²

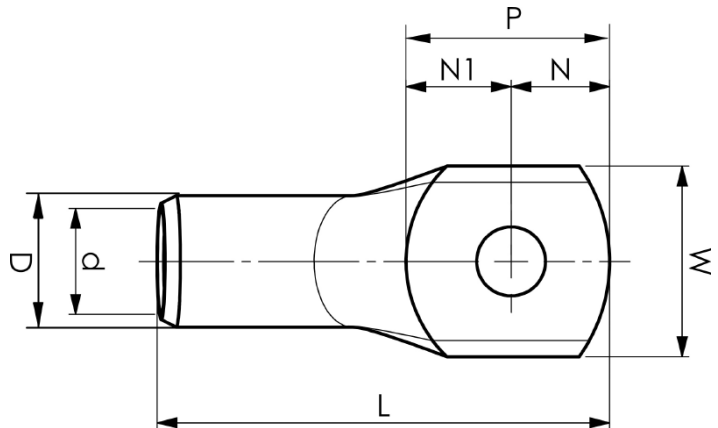
KRT50-12

- Material: Cu 99.95%, tin plated Cu/Sn.
- Inspection hole.
- For stranded (class 2) Cu conductors.

**Example of marking KRT: 16 (neck) Elpress
logotype 70 10 (palm)**

16 = Die No. 70 = mm² 10 = palm hole for M10

Tube terminal type KRT for stranded (class 2) Cu conductors, 50 mm², with an M12 hole in the palm.
Used with Elpress certified systems V600, V1300 or V250.



Item number: **7301-277200**

EAN: **7393487007574**

W (mm): **22**

t (mm): **3.5**

N (mm): **12**

N1 (mm): **14**

P (mm): **26**

d (mm): **10**

D (mm): **14**

L (mm): **56**

s (mm): **22**

Screw: **M12**

Inspection hole: **Yes**

AWG/MCM Cu: **1/0 AWG**

mm² Cu: **50**