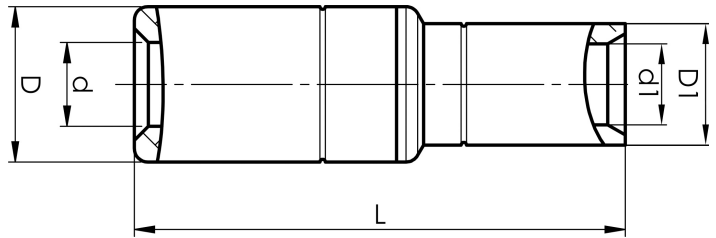


AKS50-50

- Connector from Al conductor to Cu conductor.
- Stranded/solid Al conductors, stranded/multi-stranded Cu conductors.
- For multi-stranded Cu conductors, contact crimping using the Dual system is recommended.
- Two crimps are required for Al, normally one for Cu.



AlCu through connector, from Al conductor to Cu conductor. For stranded Al cable 50 mm², or for solid Al cable 70 mm², to stranded/multi-stranded Cu cable 50 mm². When crimping the Cu section, place the dies between the mark on the sleeve and the edge of the Cu section. Used with Elpress certified systems V1300, V250.



Item number: **7333-400800**

EAN: **7393487009752**

s1 (mm): **23**

d (mm): **9.6**

D (mm): **20**

L (mm): **75.5**

s (mm): **45**

d1 (mm): **11**

D1 (mm): **14.5**

AWG/MCM Stranded Al: **1/0 AWG**

AWG/MCM Solid Al: **20 AWG**

AWG/MCM Cu: **1/0 AWG**

mm² Stranded Al: **50**

mm² Solid Al: **70**

mm² Cu: **50**

Screen conductor (mm²): **57**