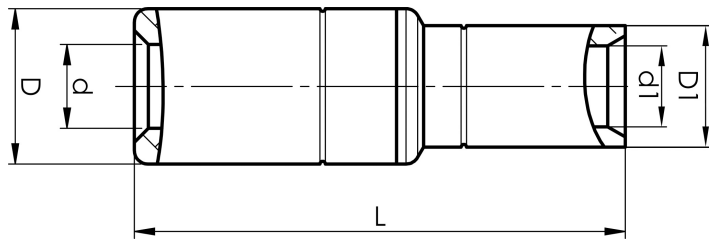


AKS400-185

- Connector from Al conductor to Cu conductor.
- Stranded/solid Al conductors, stranded/multi-stranded Cu conductors.
- For multi-stranded Cu conductors, contact crimping using the Dual system is recommended.
- Two crimps are required for Al, normally one for Cu.



AlCu through connector, from Al conductor to Cu conductor. For stranded Al cable 400 mm² to stranded/multi-stranded Cu cable 185 mm². When crimping the Cu section, place the dies between the mark on the sleeve and the edge of the Cu section. Used with Elpress certified system V250.



Item number: **7333-403800**

EAN: **7393487010055**

s1 (mm): **30**
d (mm): **25**
D (mm): **40**
L (mm): **124**
s (mm): **83**
d1 (mm): **21**
D1 (mm): **27**

AWG/MCM Stranded Al: **700 MCM**

AWG/MCM Cu: **350 MCM**

mm² Stranded Al: **400**

mm² Cu: **185**