

AKS300B-240A

- Used for splicing Al conductors and Cu conductors
- Stranded/solid Al conductors, stranded/flexible Cu conductors.
- For multi-stranded Cu conductors, contact crimping using the Dual system is recommended.
- Two crimps are needed for Al.

AlCu through connector for stranded/solid Al cable 300 mm² to stranded/flexible Cu cable 240 mm².

When crimping the Cu section, place the dies between the mark on the sleeve and the edge of the Cu section. Used with Elpress certified systems V1300, V250.



Item number: **7333-448400**

EAN: **7393487060609**

s1 (mm): **40**
d (mm): **22.3**
D (mm): **37**
L (mm): **126.5**
s (mm): **68**
d1 (mm): **22.5**
D1 (mm): **29**

AWG/MCM Stranded Al: **550 MCM**

AWG/MCM Cu: **450 MCM**

mm² Stranded Al: **300**

mm² Cu: **240**

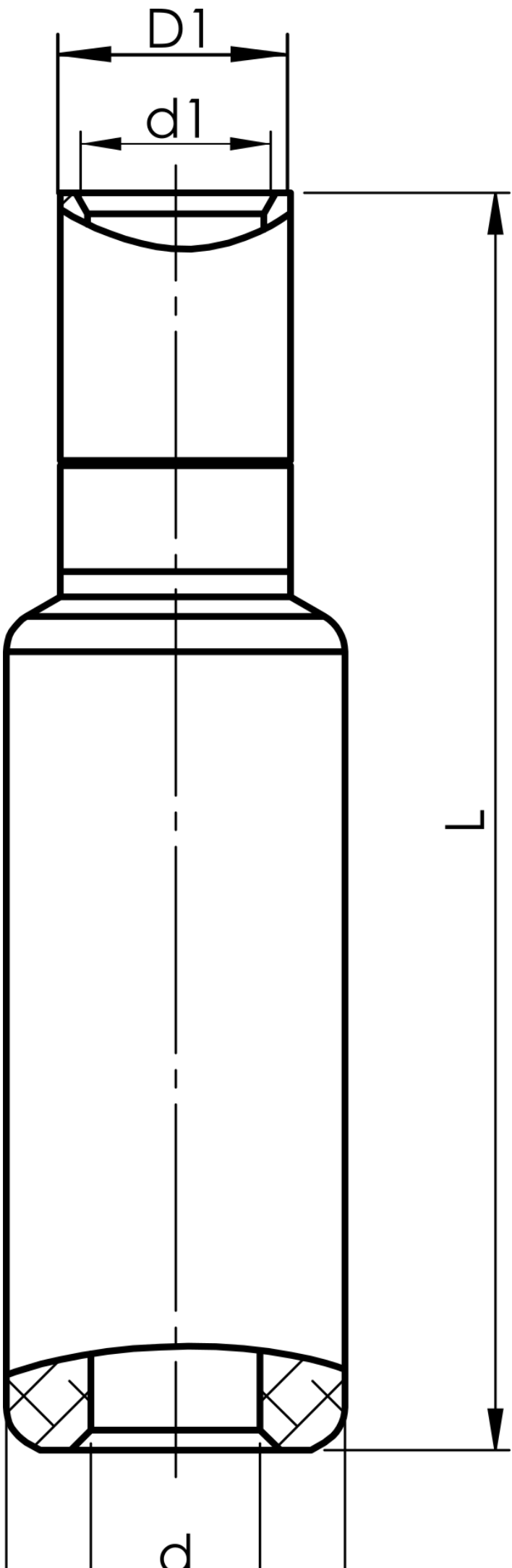


Image not found or type unknown