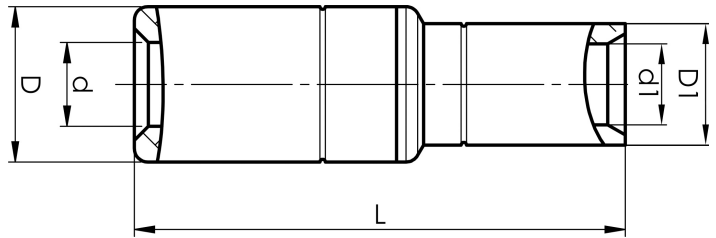


AKS25-10

- Connector from Al conductor to Cu conductor.
- Stranded/solid Al conductors, stranded/multi-stranded Cu conductors.
- For multi-stranded Cu conductors, contact crimping using the Dual system is recommended.
- Two crimps are required for Al, normally one for Cu.



AlCu through connector, from Al conductor to Cu conductor. For stranded Al cable 25 mm², or for solid Al cable 35 mm², to stranded/multi-stranded Cu cable 10 mm². When crimping the Cu section, place the dies between the mark on the sleeve and the edge of the Cu section. Used with Elpress certified systems V1300, V250.



Item number: **7333-443200**

EAN: **7393487020511**

s1 (mm): **14**
d (mm): **6.8**
D (mm): **13**
L (mm): **45.5**
s (mm): **29**
d1 (mm): **5**
D1 (mm): **8**

AWG/MCM Stranded Al: **4 AWG**

AWG/MCM Solid Al: **2 AWG**

AWG/MCM Cu: **8 AWG**

mm² Stranded Al: **25**

mm² Solid Al: **35**

mm² Cu: **10**