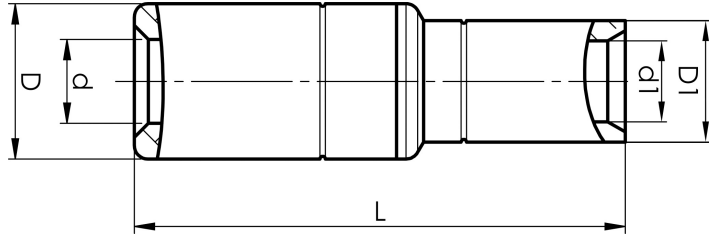


AKS185-70

- Connector from Al conductor to Cu conductor.
- Stranded/solid Al conductors, stranded/multi-stranded Cu conductors.
- For multi-stranded Cu conductors, contact crimping using the Dual system is recommended.
- Two crimps are required for Al, normally one for Cu.



AlCu through connector, from Al conductor to Cu conductor. For stranded Al cable 185 mm², or for solid Al cable 240 mm², to stranded/multi-stranded Cu cable 70 mm². When crimping the Cu section, place the dies between the mark on the sleeve and the edge of the Cu section. Used with Elpress certified systems V1300, V250.



Item number: **7333-440600**

EAN: **7393487024328**

s1 (mm): **25**
d (mm): **17.6**
D (mm): **32**
L (mm): **93.5**
s (mm): **61**
d1 (mm): **13**
D1 (mm): **17**

AWG/MCM Stranded Al: **350 MCM**

AWG/MCM Solid Al: **500**

AWG/MCM Cu: **2/0 AWG**

mm² Stranded Al: **185**

mm² Solid Al: **240**

mm² Cu: **70**

Screen conductor (mm²): **72-88**